

A

B

C

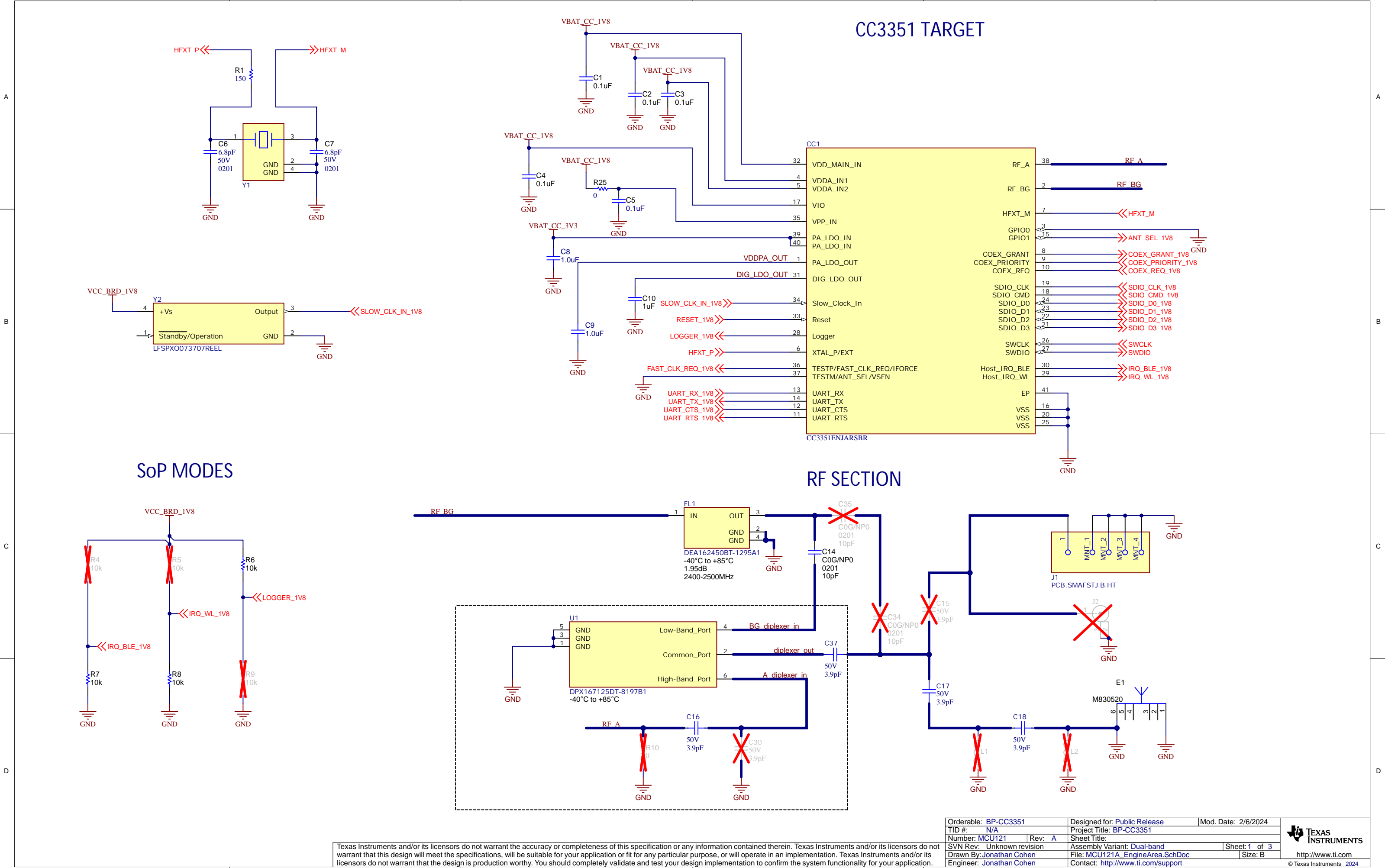
D

A

B

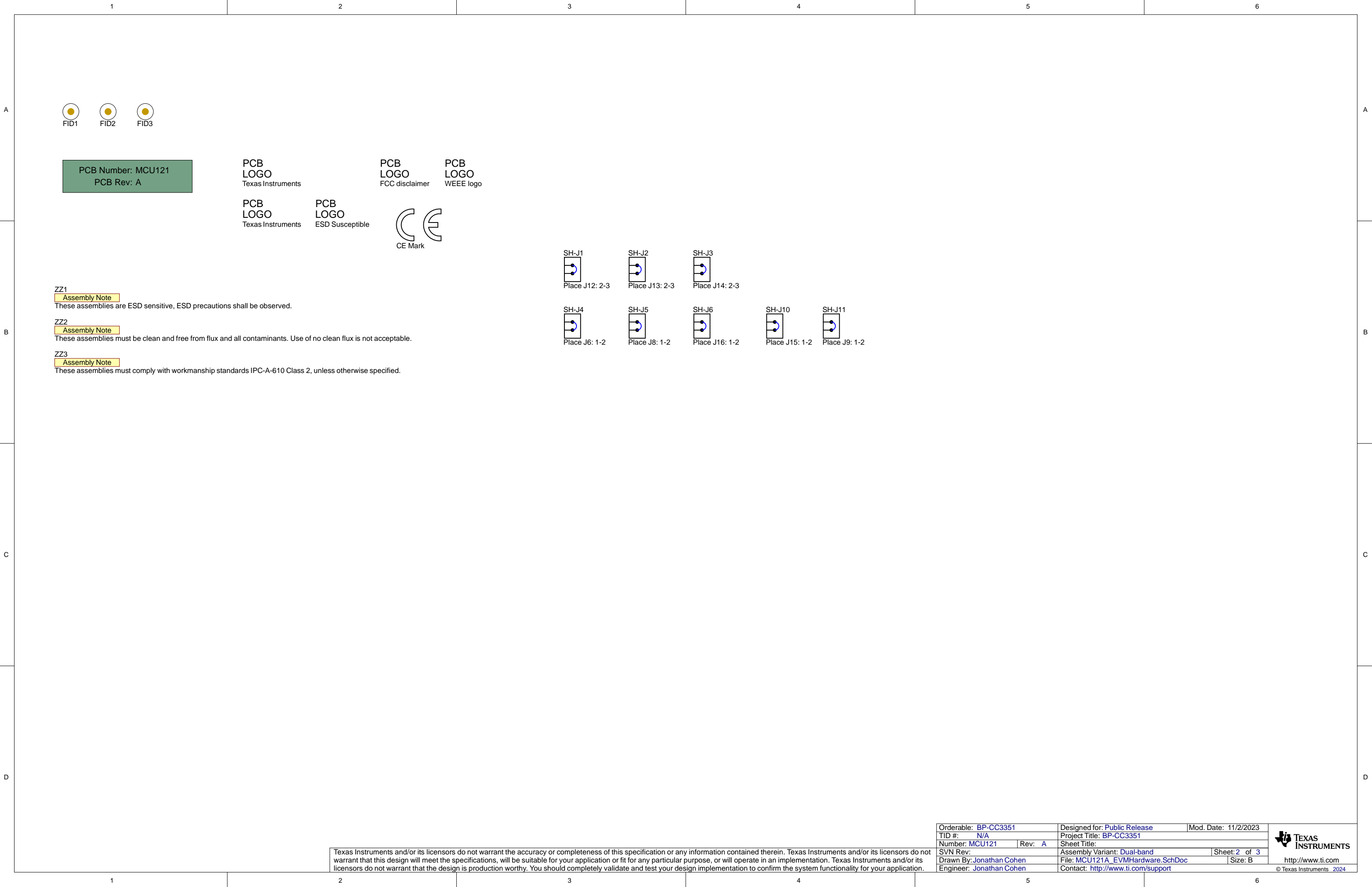
C

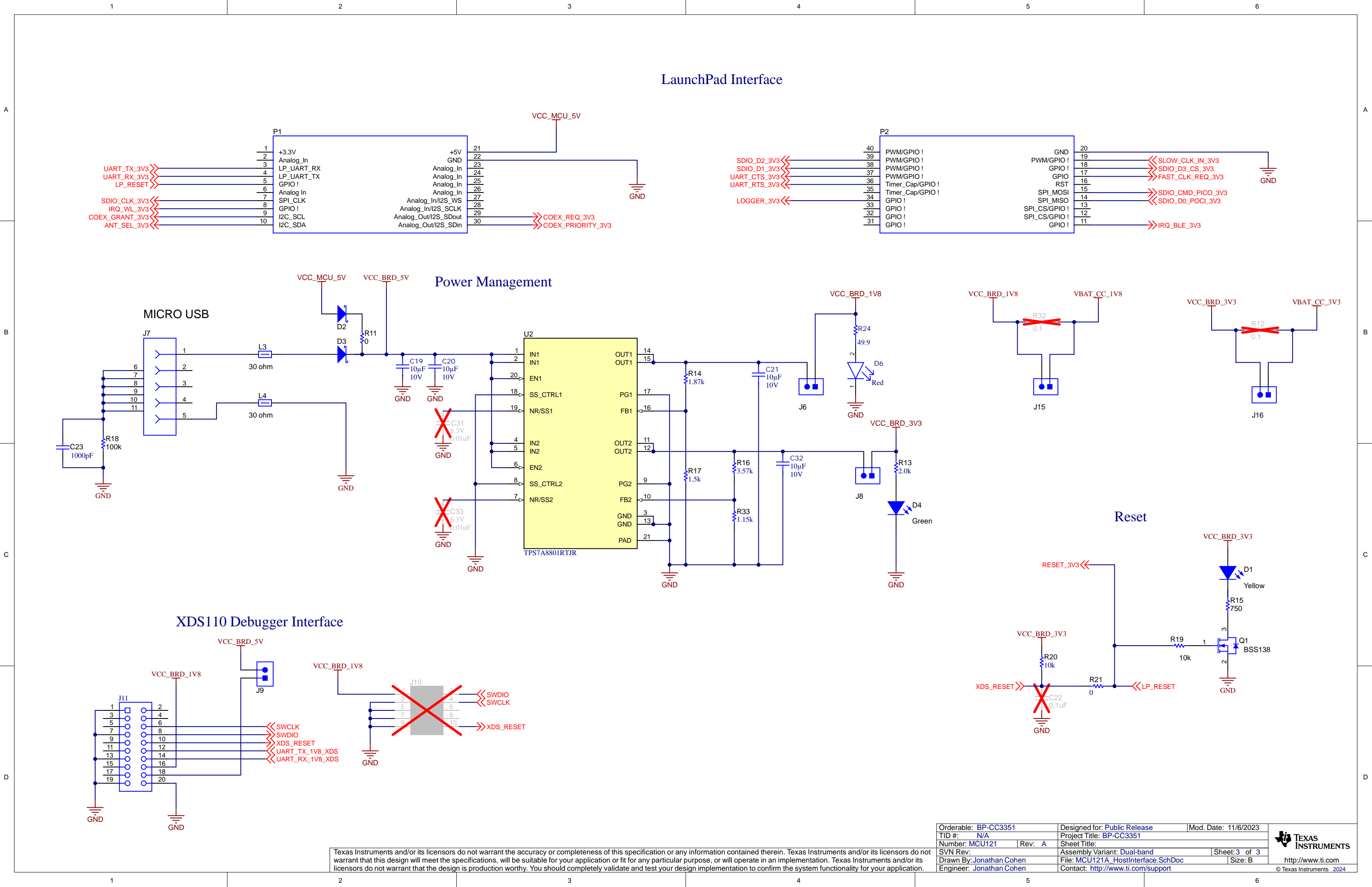
D



Texas Instruments and/or its licensors do not warrant the accuracy or completeness of this specification or any information contained therein. Texas Instruments and/or its licensors do not warrant that this design will meet the specifications, will be suitable for your application or fit for any particular purpose, or will operate in an implementation. Texas Instruments and/or its licensors do not warrant that the design is production worthy. You should completely validate and test your design implementation to confirm the system functionality for your application.

Orderable: BP-CC3351	Designed for: Public Release	Mod. Date: 2/6/2024
TID #: N/A	Project Title: BP-CC3351	
Number: MCU121	Rev: A	Sheet Title:
SVN Rev: Unknown revision	Assembly Variant: Dual-band	Sheet: 1 of 3
Drawn By: Jonathan Cohen	File: MCU121A_EngineArea.SchDoc	Size: B
Engineer: Jonathan Cohen	Contact: http://www.ti.com/support	





LaunchPad Interface

Power Management

XDS110 Debugger Interface

Reset

Orderable: BP-CC3351	Designed for: Public Release	Mod. Date: 11/6/2023
TID #: N/A	Project Title: BP-CC3351	
Number: MCU121	Rev: A	Sheet Title:
SVN Rev:	Assembly Variant: Dual-band	Sheet: 3 of 3
Drawn By: Jonathan Cohen	File: MCU121A_HostInterface.SchDoc	Size: B
Engineer: Jonathan Cohen	Contact: http://www.ti.com/support	

Texas Instruments and/or its licensors do not warrant the accuracy or completeness of this specification or any information contained therein. Texas Instruments and/or its licensors do not warrant that this design will meet the specifications, will be suitable for your application or fit for any particular purpose, or will operate in an implementation. Texas Instruments and/or its licensors do not warrant that the design is production worthy. You should completely validate and test your design implementation to confirm the system functionality for your application.

Level Shifters

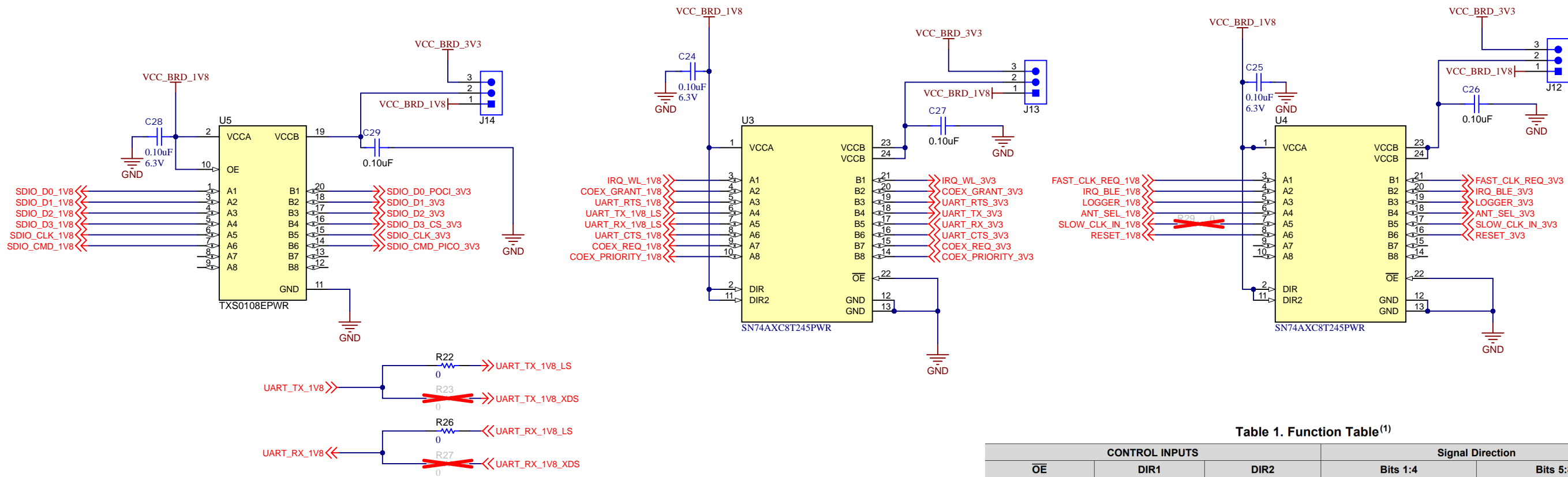


Table 1. Function Table⁽¹⁾

CONTROL INPUTS			Signal Direction	
OE	DIR1	DIR2	Bits 1:4	Bits 5:8
H	X	X	Disabled (Hi-Z)	
L	L	L	B to A	
L	L	H	B to A	A to B
L	H	L	A to B	
L	H	H	A to B	B to A

Texas Instruments and/or its licensors do not warrant the accuracy or completeness of this specification or any information contained therein. Texas Instruments and/or its licensors do not warrant that this design will meet the specifications, will be suitable for your application or fit for any particular purpose, or will operate in an implementation. Texas Instruments and/or its licensors do not warrant that the design is production worthy. You should completely validate and test your design implementation to confirm the system functionality for your application.